

Summary of Qualifications

CM SOLUTIONS

Solutions for Project Success

www.thecmsolution.com

Water



Energy



Facilities



Transportation



Oil & Gas



Transportation



Transportation

CM Solutions supports premier transportation projects including rail, airport and highway infrastructure. Our team ensures project controls management, scheduling, cost engineering, contract administration and claims management are optimized to bring these multi-faceted projects in on-time and on-budget.



TRANSPORTATION PROJECTS

CM Solutions is the partner you can trust to add depth of expertise in project controls. Since 2001, we have been helping contractors, owners, and agencies in the private and public sectors save time and money with proven project controls for construction management. Tightly managed schedules and budgets are the keys to success when multi-million-dollar projects are on the line.

Our Qualifications

- Experience** With over 20 years experience supporting complex projects for clients such as LA Metro, LA World Airports, and Caltrans, we are familiar with the unique challenges and nuances of transportation projects.
- Expertise** Experts with variety of backgrounds and certifications, including PE, PMP, PSP, PMI-SP and Six Sigma.
- Diversity** Federal, state and local certifications for SBE, DBE, WBE, WOSB, LBE and LBE.
- Presence** Headquarters in California, with locations in Washington, Arizona, Colorado, and Texas

Our Services

Program & Project Services	Planning and Scheduling	Cost Controls	Risk Management & Claims Avoidance	Executive Reporting & Dashboards
<ul style="list-style-type: none"> •Construction Management •Scope Management •Environmental Reviews, Permitting •Contract Compliance 	<ul style="list-style-type: none"> •CPM Scheduling •Project Planning •Time Impact Analysis •4D & 5D Scheduling & Modeling 	<ul style="list-style-type: none"> •Program and Project Budgets •Cost Forecasting •Earned Value Management •Estimating 	<ul style="list-style-type: none"> •Claims Preparation •Management of Change •Schedule Risk Analysis •Time Impact Analysis 	<ul style="list-style-type: none"> •Dashboards for Complex Projects •Integrating Systems and Data •Power BI •Training for Project Teams

Integrated Capabilities Across Sectors



Transportation



Water & Wastewater



Energy



Facilities



Oil & Gas

\$20B

Project Value

10

Major Projects

TRANSPORTATION

Connecting Us to the World.



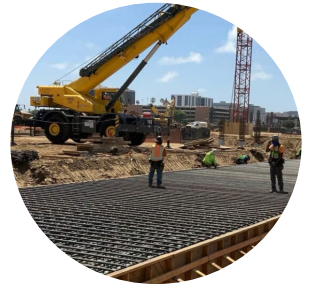
Airport Terminals



Rail



Highways



Airport Landside

Terminal Cores & APM Interface

Owner: Los Angeles World Airports (LAX)
Contractor: Austin Commercial
Project Value: \$336 million

This project provides multiple terminal improvements at LAX that integrate existing terminals to the new Automated People Mover (APM) system. CM Solutions supports both the owner/CM firm and general contractor through collaborative scheduling services.

West Gates at Tom Bradley Int'l Terminal

Owner: Los Angeles World Airports (LAX)
Contractor: Turner-PCL JV
Project Value: \$1.6 billion

The West Gates project is a new state-of-the-art 12-gate concourse connected to the Tom Bradley International Terminal by two underground passageways and earned the LEED Gold certification. CMS provided scheduling and cost engineering support, including monthly cost reconciliations, status reports, risk management support and field scheduling updates.

Crenshaw/LAX Transit Corridor & Southwest Yard Maintenance Facility

Owner: LA Metro
Location: Los Angeles, CA
Project Value: \$2 billion

This project included the 8.5-mile light rail line with 8 stations and the Southwestern Yard Maintenance Facility. CM Solutions provided cost estimating services for conceptual and budget planning, design optimization and constructability, value engineering, economic evaluations, procurement and contract administration support, change orders and contract claims.

I-10 HOV Lanes and Bridge Widening

Owner: Caltrans District 7
Location: West Covina, CA
Project Value: \$91 million

This project adds an HOV lane to the congested I-10 freeway through Baldwin Park and West Covina, including bridge improvements at the overpasses. CMS performed schedule analysis, evaluation and presentations of multiple delay events, which allowed the contractor to successfully negotiate a time extension of 291 days (30.3% increase).

Consolidated Rent-A-Car (ConRAC)

Owner: Los Angeles World Airports (LAX)
Developer/Contractor: LA Gateway Partners
Project Value: \$1.6 billion

The largest of its kind in the world once open, the ConRAC facility will bring rental car agencies into one location. It includes on-site fueling stations, light maintenance areas, parking, and an interface with the new Automated People Mover. CMS provides project controls management and scheduling support, including contractor schedule reviews, monthly reporting, time impact analysis and risk management.

Transportation Project Index

Project Name	Project Type	Project Description	Owner/Agency	Project Value	Project Dates
Airport Capital Improvement Program	Airports	This program includes projects under the Landside Access Modernization Program, the West Gates of Tom Bradley International Terminal, other new buildings, and multiple rehabilitation/ improvements for terminals, runways, and utility projects. <i>CMS provides scheduling, cost engineering, estimating and contract compliance support for projects from the conceptual design and engineering phases through to closeout.</i>	Los Angeles World Airports (LAWA)	\$14B	2016-Present
Airport Police Facility	Airport Facilities	This 160,000 sq. ft. facility consolidates operations from eight locations under one roof and includes a shooting range, dog kennels and suspect processing area. It was designed to attain LEED Silver certification. <i>CMS staff provided scheduling review services for the project, including time impact analyses and risk mitigation.</i>	Los Angeles World Airports (LAWA)	\$216M	2020-2022
Automated People Mover (APM)	Airport Rail	The APM is a 2.25-mile elevated train system with six stations. It will greatly reduce congestion around the terminals by connecting the LAX airport to the LA Metro train system, in addition to parking and rental car facilities. <i>CMS consultants and partners provide scheduling, cost engineering and contract administration services.</i>	Los Angeles World Airports (LAWA)	\$2B	2016-Present
Bus Yard Facilities for Airport	Airports, Bus Yards	This project relocates the airport's bus yard facilities to a new location and will accommodate electric buses and EV charging stations, in addition to a new 4,000 sq. ft. building. <i>CMS provided scheduling and planning services for this facility.</i>	Los Angeles World Airports (LAWA)	Multi-million	2020-2022
Caltrans I-10 Whitewater Bridge Repairs	Bridges	The Whitewater Bridge replacement in Riverside County involved construction of CIDH piling and rock slope protection. Project ran in two phases to allow for rainy season flows to be diverted away from work areas. <i>CMS provided project planning and scheduling services. Specific activities included developing and issuing baseline schedule, project narrative document, project cost loading, monthly updates, and change management.</i>	Caltrans District 8	Multi-million	2020-2021
Consolidated Rent-A-Car Facility (ConRAC)	Airport Facilities	The largest of its kind in the world once open, the ConRAC facility will bring rental car agencies into one location. It includes on-site fueling stations, light maintenance areas, parking, and an interface with the new Automated People Mover. <i>CMS provides project controls management and scheduling support, including the baseline schedule, contractor schedule reviews, monthly reporting, time impact analysis and risk management.</i>	Los Angeles World Airports (LAWA)	\$1.6B	2017-Present
Crenshaw/LAX Transit Corridor and Southwest Yard Maintenance Facility	Light Rail	This project included the 8.5-mile light rail line with 8 stations and the Southwestern Yard Maintenance Facility. <i>CM Solutions provided cost estimating services for conceptual and budget planning, design optimization and constructability, value engineering, economic evaluations, procurement and contract administration support, change orders and contract claims.</i>	Los Angeles County Metropolitan Transportation Authority (LA Metro)	\$2B	2016-2017
Diverse Business Development & Engagement	Airports, Diverse Business, Community Engagement	The Airport manages programs to support business inclusivity, local jobs and social responsibility in the community. These programs help contractors meet their contract inclusivity goals and engage small and disadvantaged businesses on airport projects. <i>CMS staff developed systems to help contractors navigate the owner/agency systems, and to improve monitoring of contractor inclusivity goals. They also supported community outreach activities.</i>	Los Angeles World Airports (LAWA)		2019-2022
Environmental Compliance & Sustainability Support Services	Rail, Sustainable/ Green Project	Metro's Environmental Compliance and Sustainability department manages various projects and programs to help minimize environmental impacts from the design, construction, operation and maintenance of capital projects. <i>CMS is providing cost controls support as well as strategic planning and creative design for these projects.</i>	Los Angeles County Metropolitan Transportation Authority (LA Metro)	Multi-million	2019-Present

Transportation Project Index

Project Name	Project Type	Project Description	Owner/Agency	Project Value	Project Dates
Harbor Department Administration Building Complex	Ports	Project involved demolition of the former Harbor Department Administration Building complex. <i>CMS prepared the baseline schedule according to project specifications, as well as monthly updates throughout the project.</i>	Port of Long Beach	\$3.1M	2020-2021
I-10 HOV Lanes and Bridge Widening	Claims, Roadways/Highways	This project adds an HOV lane to the congested I-10 freeway through Baldwin Park and West Covina, including bridge improvements at the overpasses. <i>CMS performed schedule analysis, evaluation and presentations of multiple delay events, which allowed the contractor to successfully negotiate a time extension of 291 days (30.3% increase).</i>	Caltrans District 7	\$91M	2018-2021
I-15 Widen Lanes and Bridges	Claims, Roadways/Highways	This project involves widening the State Highway I-15 through the City of Victorville, including widening bridges and ramp improvements. <i>CMS performed schedule analysis, evaluation and presentation of multiple delay events, allowing the contractor to successfully negotiate a 106-day time extension.</i>	Caltrans District 8	\$70M	2019-2020
I-95 Express Lanes	Claims, Roadways/Highways	The I-95 Express Lanes reconstruction project included milling, resurfacing, widening, restriping, new ramps, and various other work along 9 miles of the I-95 in Florida. <i>CM Solutions supported a subcontractor with forensic scheduling services to determine impacts to the baseline schedule.</i>	Florida Department of Transportation (FDOT)	\$457M	2021-2021
Inclusivity Software Projects	Airports, Software Implementation	The airport's Business, Jobs, and Social Responsibility group supports capital projects by monitoring local workforce and diversity requirements required by the contracts. <i>CM Solutions' services included cloud services software assessment, selection and implementation, and business intelligence dashboards to provide accurate insight into the status of contractors' diversity requirements.</i>	Los Angeles World Airports (LAWA)		2019-2021
LAX 5th Feeder	Airport Utilities, Electric	The utilities' fifth feeder was built to meet the airport's need for increased capacity and reliability to support the coming modernization projects. It involved new electrical duct banks and firewater and domestic water lines. <i>CMS developed the fully resource and cost loaded baseline schedule for the four-phased approach, and provided monthly schedule updates.</i>	Los Angeles World Airports (LAWA)	\$20M	2014-2016
LAX Economy Parking Facility	Airport Facilities, Parking	This project involved construction of a new 4,300-stall parking structure for the airport, along with new drop-off/pick-up locations and short- and long-term parking options. <i>CMS provided the baseline schedule, reviewed contractors' schedules, and prepared monthly updates and reports. A 4D schedule was prepared to effectively communicate project status to the airport's executive management.</i>	Los Angeles World Airports (LAWA)	\$300M	2018-2021
LAX Receiving Station RS-X	Airport Utilities, Electric	The new receiving station is a collaboration between Los Angeles World Airports and the City of LA Department of Water and Power and includes high voltage duct banks and a connection to LADWP substation equipment. <i>CMS Solutions provided scheduling and cost engineering support for the project.</i>	Los Angeles World Airports (LAWA)	\$112M	2020-2022
Mickey Leland International Terminal at George Bush Intercontinental Airport (IAH) in Houston, TX	Airport Terminals	This new 11-gate concourse is a landmark project under IAH Terminal Redevelopment Program (ITRP). It includes integrating existing terminals and expands the Federal Inspection Services (FIS) facility. It also involved enabling projects, including new roadways, airfield improvements, and a parking structure. <i>CM Solutions is providing reporting, planning and scheduling services to the general contractor.</i>	Houston Airport System	\$1.5B	2022-Present
Natural Gas Vehicle (NGV) Program	Natural Gas	This program involves upgrading and developing natural gas vehicle filling stations. <i>CM Solutions provided scheduling and cost support for a portfolio of natural gas vehicle projects.</i>	Sempra Energy - So Cal Gas (SCG)	Multi-million	2015-Present

Transportation Project Index

Project Name	Project Type	Project Description	Owner/Agency	Project Value	Project Dates
Queensway Southbound Ramps J & K Over Scenic Harbor Drive	Claims, Roadways/ Highways	CM Solutions performed forensic analysis, created historical baseline and as-built schedule files incorporating multiple delay issues. We evaluated impacts and project delays and prepared a Time Impact Schedule Analysis. This was used to effectively secure a 185 working day contract time extension for the contractor.	Los Angeles County Dept of Public Works (LACDPW)	\$3.8M	2009-2011
Secondary Sewer Renewal Program	Roadways/ Highways, Wastewater, Sanitation	This project involves a series of projects to correct structural deficiencies in the sewer collection system, and involves replacing or rehabilitating sections of sewer pipes throughout the City of Los Angeles. CMS provided project planning and scheduling services, including developing and the baseline schedule, and monthly schedule updates, cost loading, and change management.	"City of Los Angeles, CA"	\$1M - \$2.5M	2022-Present
Taxiway P	Airports	CM Solutions provided planning and scheduling services for this airside improvement project.	Los Angeles World Airports (LAWA)	Multi-million	2018-2021
Terminal Cores & APM Interface	Airports	This project provides multiple terminal improvements at LAX that integrate existing terminals to the new Automated People Mover (APM) system. CM Solutions supports both the owner/CM firm and general contractor through collaborative scheduling services.	Los Angeles World Airports (LAWA)	\$336M	2018-Present
Van Nuys Airport Runway Reconstruction and Repair	Airports, Runways	This project involved upgrades to the 2 main runways of one of the busiest general aviation airports in the US. CMS worked closely with the project team and contractors to build a highly detailed schedule, including an hour-by-hour schedule that was used to complete work during the night and two 56-hour closures for the longer, main runway.	Los Angeles World Airports (LAWA)	\$19.1M	2021-2022
West Gates at Tom Bradley International Terminal	Airport Terminals	The West Gates project is a new state-of-the-art 12-gate concourse connected to the Tom Bradley International Terminal by two underground passageways, and earned the LEED Gold certification. CMS provided scheduling and cost engineering support, including monthly cost reconciliations, status reports, risk management support and field scheduling updates.	Los Angeles World Airports (LAWA)	\$1.6B	2016-2021
Willows Road Bridge Scour	Bridges, Roadways/ Highways	This project is to install monitoring instruments to measure sediment level erosion counter measures at the Willows Road bridge over Viejas Creek. This project was requested to meet federal bridge requirements. CM Solutions is providing a time impact analysis to evaluate time delays due to various re-designs and other activities.	San Diego County Public Works	\$6.5M	2021-2021