

FACILITIES PROJECTS



SOLUTIONS FOR PROJECT SUCCESS

Focused Expertise in Project Controls

When multimillion-dollar projects are on the line, every detail counts. Tightly managed schedules and budgets are the key to success. This is where CM Solutions shines. Since 2001, we have been helping contractors, owners and agencies in the private and public sector save time and money with proven project controls for construction management. Our team of experts give project managers the information to keep projects and profitability on track, and to ensure peace of mind.

- Project Planning
- CPM Scheduling
- Collaborative Scheduling
- Time Impact Analysis
- Claims Resolution
- Risk Management
- Cost Controls
- Earned Value Management
- Contract Compliance
- Reporting & Dashboards
- Staff Augmentation
- EEO, DBE and Labor Compliance Monitoring

Your Certified Diversity Partner

With multiple SBE/DBE/WBE certifications, CMS is a diversity partner you can trust to add depth of expertise in project controls.

- DBE – Recognized by: California Unified Certification Program (CUCP); Texas Unified Certification Program (TUCP); State of Washington OMWBE
- LBE – Recognized by: City of Los Angeles
- LSBE – Recognized by: County of Los Angeles
- SBE – Recognized by: State of California DGS; City of Los Angeles; LA Metro; Port of Long Beach
- WBE – Recognized by: California Public Utilities Commission (CPUC); Women's Business Enterprise National Council (WBENC)
- WOSB – Recognized by: Women's Business Enterprise National Council

NAICS: 541611, 541330, 541618, 561990, 561110
DUNS: 016406237

INTEGRATED CAPABILITIES ACROSS SECTORS



ENERGY



TRANSPORTATION



WATER/WASTEWATER



FACILITIES



OIL AND GAS

FACILITIES

Critical Institutions Serving Our Communities

CM Solutions works with project teams around the world, supporting new construction and renovations for a variety of public and commercial facilities, including data centers, health care facilities, correctional facilities, and educational institutions.

Global
Locations
Around the
World

\$1.4B
Project
Value

Hospital Seismic Upgrades and Capital Improvements

Owner: Huntington Hospital
Location: Pasadena, CA
Project Value: \$300 million

A critical Level II trauma facility, Huntington Hospital needed seismic upgrades to bring acute care facilities into compliance with OSHPD regulations and state law. The capital improvements also support the hospital's growth to provide quality medical care to the growing population. CM Solutions managed the Facility Master Plan, an integrated schedule for this program, and coordinated closely with several project teams to ensure hospital bed capacity was maximized throughout the program's aggressive completion timeframe.

Hyperscale Data Centers

Owner: Vantage Data Centers
Location: Facilities around the world
Project Value: \$1 billion

To meet increasing demand, Vantage Data Centers is expanding the number of their data centers operating worldwide. These new state-of-the-art hyperscale data center campuses are then leased to IT companies that provide the data infrastructure essential to our modern world. CM Solutions provides the master schedule and project scheduling for new building projects and tenant fit-outs. Working for the owner, contractor and tenants allows the schedule to be a trusted source for successful construction.

San Pedro High School Modernization - Interim Housing

Owner: Los Angeles Unified School District (LAUSD)
Location: San Pedro, CA
Project Value: \$5 million

Project consists of installation of utilities, including electrical, HVAC, water, fire protection and related concrete work, for interim modular buildings as part of a larger comprehensive modernization of the school buildings and campus. CMS provided Time Impact Analyses (TIA) for a change order of 2 more buildings, as well as redesign delays, in addition to monthly updates.

Tehachapi State Prison - Health Care Facility Improvements

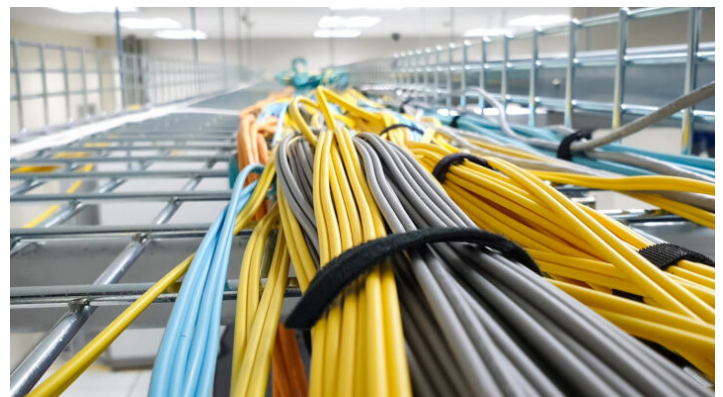
Owner: California Dept. of Corrections & Rehabilitation
Location: Tehachapi, CA
Project Value: \$13.8 million

The Tehachapi prison project involved construction of a new primary care facility and pharmacy/lab, and renovation of 4 onsite primary care clinics, along with site improvements. Project timetables and construction phasing in a highly secure area were critical aspects of this project. The CM Solutions scheduler worked with the general contractor from the beginning of each project through closeout. Project delays were successfully managed and converted into project time extensions due to thorough time impact analysis performed by the CMS team.

Pleasant Valley State Prison - Renovation of Multiple Facilities

Owner: California Dept. of Corrections & Rehabilitation
Location: Coalinga, CA
Project Value: \$15.4 million

The Pleasant Valley prison project involved construction of a new primary care facility and pharmacy/lab, and renovation of 4 onsite primary care clinics. Project timetables and construction phasing in a highly secure area were critical aspects of this project. The CM Solutions scheduler worked with the general contractor from the beginning of each project through closeout. CMS also participated in CDC's process for negotiating time extensions and performed thorough time impact analyses to help obtain an equitable extension for the contractor.



Project Name	Project Type	Project Description	Owner/Agency	Construction Manager	General Contractor	Project Value	Project Dates
San Pedro High School Modernization - Interim Housing	School	Project consists of installation of utilities, including electrical, HVAC, water, fire protection and related concrete work, for interim modular buildings as part of a larger comprehensive modernization of the school buildings and campus. CMS provided Time Impact Analyses (TIA) for a change order of 2 more buildings, as well as redesign delays, in addition to monthly updates.	Los Angeles Unified School District (LAUSD)		Kemp Bros Construction	\$5M	2021-present
Los Angeles Unified School District - Facilities Services Division	School	CM Solutions is partnering with Hill International to provide project controls services to augment LAUSD staff in managing construction, modernization, rehabilitation and repairs to facilities in the nation's second largest school district. CMS support includes project planning, scheduling, data analysis, and other construction management activities.	Los Angeles Unified School District (LAUSD)			Multi-million	2019-present
Hyperscale Data Centers	IT Infrastructure	To meet increasing demand, Vantage Data Centers is expanding the number of their data centers operating worldwide. These new state-of-the-art hyperscale data center campuses in multiple locations around the world are then leased to IT companies that provide the data infrastructure essential to our modern world. CM Solutions provides the master schedule and project scheduling for new building projects and tenant fit-outs. Working for the owner, contractor and tenants allows the schedule to be a trusted source for successful construction.	Vantage Data Centers	D Webber		\$1B	2018-present
Seismic Upgrades and Capital Improvements	HealthCare	A critical Level II trauma facility serving the San Gabriel Valley near Los Angeles, Huntington Hospital needed seismic upgrades to bring acute care facilities into compliance with OSHPD regulations and state law. The capital improvements also support the hospital's growth to continue providing quality medical care to the ever-growing population. CM Solutions managed the Facility Master Plan, an integrated schedule for this program, and coordinated closely with several project teams to ensure hospital bed capacity was maximized throughout the program's aggressive completion timeframe.	Huntington Hospital, Pasadena, CA		Bernards, Swinerton	\$300M	2017-present
Tehachapi State Prison - Health Care Facility Improvements	HealthCare	The Tehachapi prison project involved construction of a new primary care facility and pharmacy/lab and renovation of 4 on-site primary care clinics, along with site improvements. Project timetables and construction phasing in a highly secure area were critical aspects of this project. The CM Solutions scheduler worked with the general contractor from the beginning of each project through closeout. Project delays were successfully managed and converted into project time extensions due to thorough time impact analysis performed by the CMS team.	California Dept of Corrections & Rehabilitation (CDCR)	CDCR	Bowe Contractors	\$13.8M	2015-present

Project Name	Project Type	Project Description	Owner/ Agency	Construction Manager	General Contractor	Project Value	Project Dates
South Gate Educational Center Demolition & Abatement	School	The South Gate Educational Center project was to build a new college campus on the site of a former tire factory. Old buildings were all demolished and the site prepared for new construction. CMS worked with the demolition contractor to provide weekly and monthly updates to the resource-loaded schedule, adjusting for change orders to closeout.	Los Angeles Community College District		National Demolition	\$65M	2019-2020
Pleasant Valley State Prison - Renovation of Multiple Facilities	Prison	The Pleasant Valley prison project involved construction of a new primary care facility and pharmacy/lab and renovation of 4 onsite primary care clinics. Project timetables and construction phasing in a highly secure area were critical aspects of this project. The CM Solutions scheduler worked with the general contractor from the beginning of each project through closeout. CMS also participated in CDC's process for negotiating time extensions and performed thorough time impact analyses to help obtain an equitable extension for the contractor.	California Dept of Corrections & Rehabilitation (CDCR)	CDCR	Bowe Contractors	\$15.4M	2016-2020
La Mirada High School	School	CM Solutions worked with the contractor to develop and maintain the project schedule. CM Solutions performed time impact analysis for the basis of time extensions.	Los Angeles Unified School District (LAUSD)	Murphy	Mallcraft	\$15M	2002